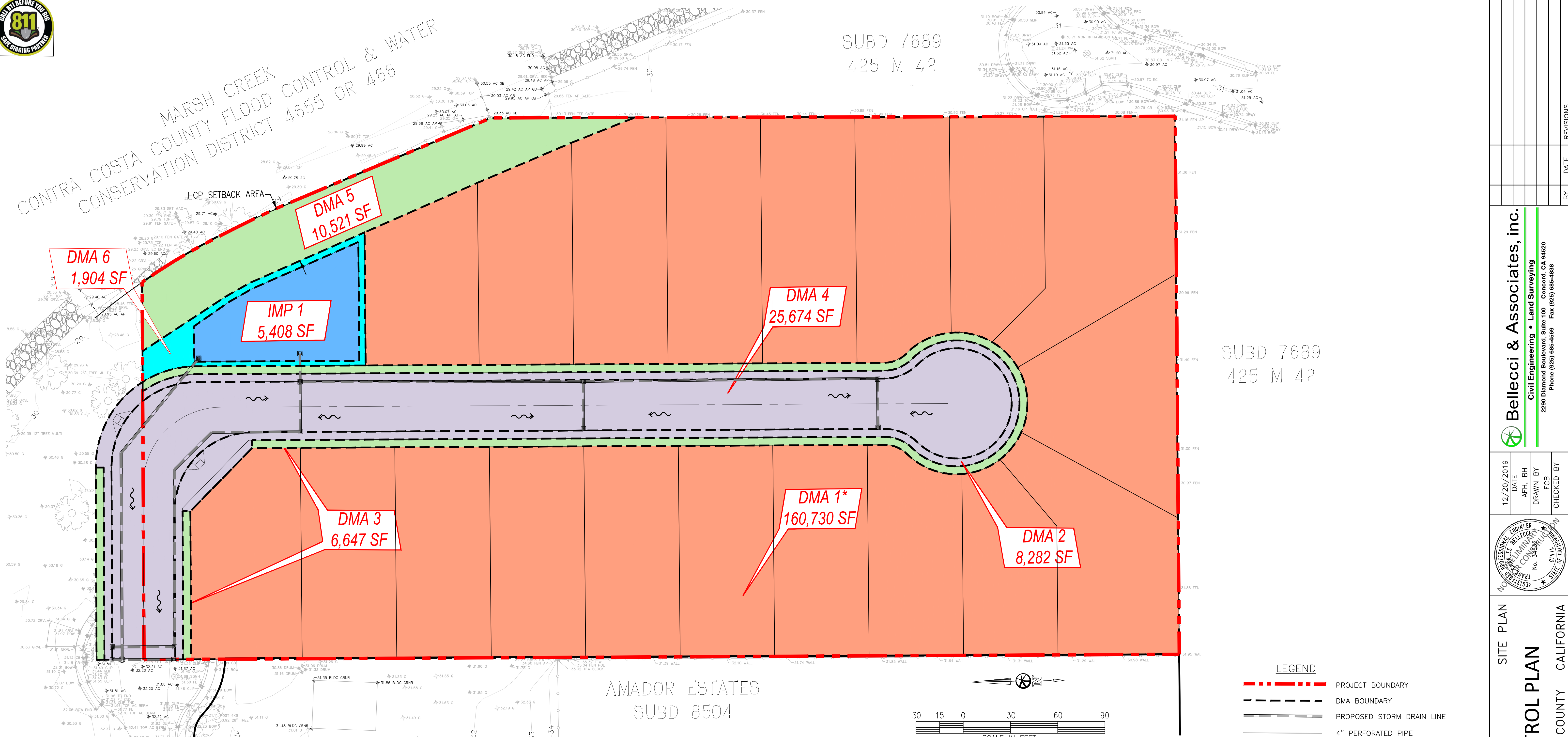




CONTRA COSTA COUNTY MARSH CREEK FLOOD CONTROL & WATER CONSERVATION DISTRICT 4655 OR 466

SUBD 7689
425 M 42



SUBD 7689
425 M 42

AMADOR ESTATES
SUBD 8504

IMP SIZING SUMMARY

SELF-TREATING AREAS

DMA NAME	AREA (SF)
DMA 1B	64,292
DMA 3	6,647
DMA 5	10,521

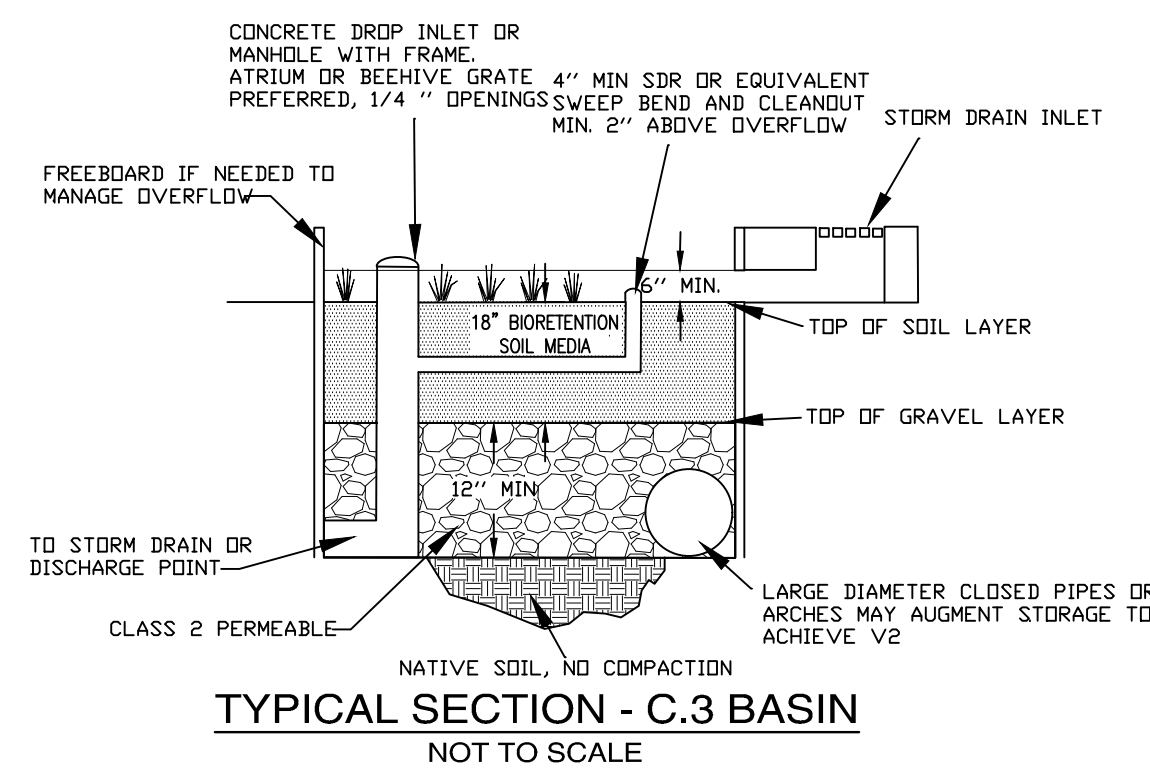
IMP NAME: IMP 1
IMP TYPE: BIORETENTION FACILITY
SOIL TYPE: C

DMA NAME	AREA (SF)	POST-PROJ. SURFACE TYPE	DMA RUNOFF FACTOR	DMA AREA x RUNOFF FACTOR
DMA 1A	96,438	CONV. ROOF	1.0	96,438
DMA 2	8,282	CONV. ROOF	1.0	8,282
DMA 4	25,674	CONV. ROOF	1.0	25,674
DMA 6	1,904	LANDSCAPE	0.1	190
TOTAL				130,584

IMP SIZING			
IMP SIZING FACTOR	RAIN ADJUSTMENT FACTOR	MINIMUM AREA OR VOLUME	PROPOSED AREA OR VOLUME
0.040	1.000	5,223	5,408

* DMA 1 TOTAL AREA INCLUDES THE FOLLOWING,

- 96,438 SF OF ROOF AND DRIVEWAY AREA (IMPERVIOUS). ASSUMES 60% COVERAGE PER LOT.
- 64,292 SF OF LANDSCAPE (PERVIOUS). ASSUMES 40% COVERAGE PER LOT.



NOTE:
BIORETENTION FACILITY SHOULD BE CONSTRUCTED PER CITY STANDARD.

LEGEND

- PROJECT BOUNDARY
- DMA BOUNDARY
- PROPOSED STORM DRAIN LINE
- 4" PERFORATED PIPE
- EXISTING CONTOURS
- PROPOSED CONTOURS
- PROPOSED LOT AREA
- IMPERVIOUS DMA - ASPHALT CONCRETE
- IMPERVIOUS DMA - LANDSCAPE
- SELF-TREATING DMA - LANDSCAPE
- BIORETENTION - C.3 BASIN
- DIRECTION OF FLOW
- STORM DRAIN MANHOLE
- STORM DRAIN INLET

- SWCP NOTES:
- ALL PROJECT DEVELOPED IMPERVIOUS AREAS TO DRAIN TO IMP'S.
 - ALL IMP'S TO BE BIO-RETENTION FACILITIES.
 - A TOTAL OF 5408 SF OF IMP BIO-RETENTION AREA IS PROVIDED WHICH EQUALS APPROXIMATELY 4.1% OF THE EQUIVALENT IMPERVIOUS AREA BEING CREATED.
 - IMP SIZING DETERMINED PER THE CONTRA COSTA COUNTY IMP SIZING TOOL SOFTWARE. ASSUMES FLOW-CONTROL, ONLY.
 - STORMWATER CONTROL PLAN REPORT TO FOLLOW AT A LATER DATE, DURING INITIAL FINAL DESIGN.

12/20/2019	DATE	AFH, BH	DRAWN BY	FCB	CHECKED BY
SITE PLAN STORM WATER CONTROL PLAN 637 HONEY LN. DEVELOPMENT CITY OF OAKLEY CONTRA COSTA COUNTY CALIFORNIA					
PRELIMINARY 1ST SUBMITTAL - DEC. 2019					
SHEET	C-2	OF	C2	JOB NO.	19053
Bellecci & Associates, inc. Civil Engineering • Land Surveying 2290 Diamond Boulevard, Suite 100 Concord, CA 94520 Phone (925) 885-4569 Fax (925) 885-4838					