



City of Oakley Bike, Parks, and Trails Map & Guide

Public Works Department

3231 Main Street
Oakley, CA 94561

925-625-7037
publicworks@ci.oakley.ca.us

For reservations visit the City's website
www.ci.oakley.ca.us



1 CIVIC CENTER PARK 3231 Main Street



Civic Center Park is Oakley's picturesque backdrop to many downtown events such as concerts, Movies in the Plaza, Friday Night Bites, Summer Fest, and the Heart of Oakley Festival. The park provides an amphitheater, picnic, tables, grass areas, and a nature themed playground.



Red Tailed Hawk

2 MAIN STREET PARK Main Street & Gardenia Avenue



Take time to enjoy the tranquility of this pocket park. It is an ideal place to relax along your way down Main Street.



DEWEY PARK 100 Acme Street



A great spot to enjoy a game of horseshoes or relax under a shade tree at this downtown pocket park.



CLAREMONT BAY PARK 4676 Bayside Way



Claremont Bay Park is a cozy park with a half basketball court, climbing boulder, and play structure.

5 SUMMER LAKE PARK 4020 Summer Lake Drive



At 17 acres, this park is Oakley's largest. The park is available for family picnics and birthday parties. It also provides large group areas on a reservation basis only. It is a great park that serves the community with many amenities.

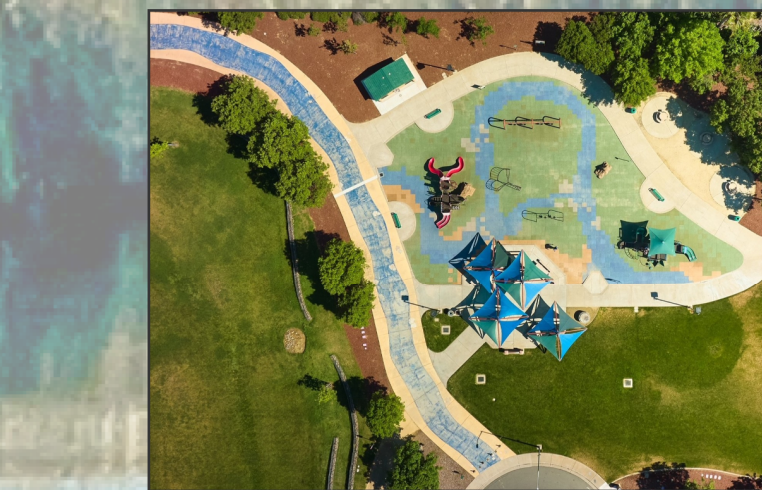


BOOK ONLINE

6 NUTMEG PARK 1068 Nutmeg Drive



Nutmeg Park has two play structures for younger and older children play levels, a picnic pavilion, and a half basketball court to enjoy.



7 HOLLY CREEK PARK 4758 Hagar Court



A peaceful park with BBQs, playgrounds, shade structures, family picnic areas, and large open space to play outdoor sports or with your dog.



Striped Bass

8 DAFFODIL PARK 590 Daffodil Drive



Daffodil Park comes complete with a pirate-themed playground for fun filled adventures on the sea! This park also has half a basketball court.



BOOK ONLINE

10 "WORLD OF DISCOVERY" AT CROCKETT PARK 4150 Richard Way



This park is home to an all abilities playground! It features an array of interactive skill and learning panels to engage children of all abilities. The playground is ADA compliant with wheelchair access points. There are also interactive areas for hearing and visually impaired children.



BOOK ONLINE

13 NOVARIA PARK 100 Brown Road



A great corner park with a grass area, playground, shaded picnic table areas, water fountain, and a walking path around the park. The Dino Dig is a thrilling hands-on experience to feel what it's like to be a real paleontologist!



14 HEATHER PARK 5164 Claremont Lane



Heather Park is a neighborhood park for kids that includes a grass area, BBQ, picnic tables, and little kid playground.



15 KODA DOG PARK 100 Oxford Drive



Koda Dog Park is a perfect place for your fur family to visit. There are separated large and small breed enclosed areas, an agility course, and pet interactive fire hydrants!



16 HEARTWOOD PARK 240 Heartwood Drive



A quiet and quaint neighborhood park tucked away on Heartwood Drive. It has a large grass area, play structure, trail loop, and arbors to rest under or have a picnic.



California Scrub-Jay

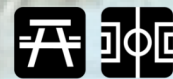


Caspian Tern



Yellow Warbler

11 FREEDOM BASIN PARK 1040 Neroly Road



Freedom Basin showcases Mount Diablo as a beautiful backdrop and wetland area with an overview deck to watch wildlife. This park is also available for large sport field gatherings.



12 MAGNOLIA PARK 5301 Daffodil Drive



This park features a baseball field, skate feature, picnic tables and two play structures, perfect for younger and older kids to enjoy varying levels of play.



17 RIATA PARK 607 Saddlebrook Way



Riata Park is a large, colorful neighborhood park. The park is welcoming with a shade structure, open space, fun climbing boulders, and playground.



Cattail & Reed Plant

Delta Smelt



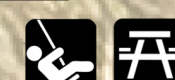
23 BRIARWOOD PARK 34 Dali Court



A park that transports kids into their own fairytale story! This kingdom has a half basketball court as well.



24 DUARTE RANCH PARK Stone Mountain Drive



This park's play structure theme is an homage to first responders. Duarte Ranch Park has a pergola to provide shade to the picnic tables and benches. The vast grass area is welcoming.



18 DELANEY PARK 581 Marathon Drive



A delightful place to spend time with family and enjoy the wildlife while strolling around Delaney Pond. The playground is great for multiple age levels to play. Three bocce courts and impressive lake fountain complete this park.

19 CATAMARAN PARK 2695 Manresa Shore Lane



This small park has a peaceful view of Mount Diablo and overlooks Summer Lake. It has a pergola, playground, picnic tables, and a large grass area.



20 CYPRESS GROVE PARK 4001 Frank Hengel Way



Cypress Grove Park is the focal point of the Cypress Grove neighborhood. There is a plethora of picnic tables, two playgrounds, open space with a sport field, and parking. It is an idyllic place for a stroll to look for turtles at the pond.



White-Tailed Kite



LAKESIDE PARK 744 Kineo Court



Lakeside Park is one of many Summer Lake neighborhood parks. It is home to a large pergola, four play structures, open space, picnic tables, and tranquility of the lake.

22 LAKEWOOD PARK

1882 Lakewood Drive



This park is tucked away in the Summer neighborhood complete with grass areas, picnic tables, play structure, and BBQs.



25 MANRESA PARK 1088 Clear Lake Drive



A small but relaxing park to enjoy a picnic, the lake, or a quick stroll to take a break. This park has a loop walk way, picnic tables, benches, and grassy area.



26 MARSH CREEK GLENN PARK 401 Hill Avenue



Marsh Creek Glenn Park provides a wide array of array of amenities such as a half basketball court, play structure, and open area. There is also access to the Marsh Creek Regional Trail.

SYCAMORE PARK Park Place & Sycamore Drive



A small park with access to a Levee Trail in the Summer Lake neighborhood.



28 CREEKSIDE PARK 3900 Creekside Way



BOOK ONLINE

Creekside Park is an Oakley favorite! This park has a skate park, bocce courts, access to the Marsh Creek Regional Trail, and Oakley's Community Garden. To learn more about the community garden, visit oakleygardens.wixsite.com/community. This park is an ideal place to see and learn about California native flora and fauna.

29 SHADY OAK PARK 301 Shady Oak Drive



Shady Oak Park is a quiet and spacious neighborhood park. It has little pockets of privacy for picnics, a half basketball court, bocce court, sports field, and climbing boulders.

30 LIVE OAK RANCH PARK 19 Solitude Court

Live Oak Ranch Park's focal point is an old California Live Oak Tree. These protected tree species and the namesake of the City, are an awe to enjoy. This park is an homage to one of the mature oak trees in the area. For a short stroll or moment to ponder makes this park the place to be.



31 OAK GROVE PARK 403 White Oak Court



Oak Grove Park has a cabin theme play structure. This neighborhood park includes amenities such as BBQs, picnic tables, and grass areas. It is a great park for young children.

32 EMERSON RANCH PARK 351 Hansford Way



A beautiful park that is both kid and animal friendly located in the Emerson Ranch neighborhood. It comes with a half basketball court, a picnic pavilion, and a peaceful pond to walk around.

33 SIMONI RANCH OPEN SPACE Simoni Ranch Road & Main Street



Simoni Ranch Open Space is a pocket park on Simoni Ranch road to run or walk for exercise.



34 HARVEST PARK 3800 Marsh Way



Harvest Park is nestled away making it an ideal to enjoy the open space and picnic tables.

35 LAUREL BALL FIELDS PARK 650 Laurel Road



Laurel Ball Fields is home to three baseball fields, skate park, and a close proximity to the Delta de Anza Regional Trail. It's a great place to walk pets, relax in the shade, and plenty of lawn space. There are shade structures over the play structure and picnic tables.

36 LEEWARD PARK 147 Danvers Court



This small neighborhood park great for walking pets or letting children run off some energy with a small, grassy play area.



37 OAKLEY RECREATION CENTER 1250 O'Hara Avenue



BOOK ONLINE

The Oakley Recreation Center has a sports field and adult fitness area with parking. This center is the hub for recreation activities and classes. The center can also be rented out for events and birthday parties!

Recreation Icon Legend

This guide is designed to acquaint you with our parks, bike routes, and trails. Whether you live here or are looking for a fun getaway, you'll see that Oakley has something for everyone.

The first residents of Oakley were Indians of the Miwok, Yokut, and Ohlone Tribes. At the time, it was covered with chaparral and oak trees with coyotes and jack rabbits roaming the area.

In 1846, Doctor John Marsh was the first Anglo settler in Contra Costa County. He built a riverboat freight landing, the first in the county, on the San Joaquin River called Marsh Landing. Marsh Landing and Marsh Creek Road were vital to the early development of Oakley and its neighboring cities.

Doctor John Marsh paved the way for others. One of the first settlers in Oakley was James O'Hara. He was credited for utilizing the sandy soil of the area to plant nut trees and grapes. Andrew Portman built levees then planted acres of wheat, alfalfa, and hay. Randolph Marsh named the city after winning a game of cribbage. He and Alden Norcross plotted and recorded the maps for Oakley.

The City of Oakley, incorporated in 1999, prides itself on its growing community, abundant recreational opportunities, and high quality of life with planned business and commercial development. Oakley is truly, "A Place for Families in the Heart of the Delta."

Welcome to Oakley!

